

# CTE TRACCESS 230/75

↑ 75 ft  
→ 39 ft  
441 lb

Excellent  
performance  
to weight  
ratio.

Versatile.  
Compact.  
Capable.



# CTE TRACCESS 230/75

- 75 ft working height with compact mobile configuration
- 39 ft outreach at full basket capacity of 441 lb
- 6393 lb machine weight makes it easy to transport



**Unrestricted  
working area**



**Optional  
Winch with 507 lb  
lifting capacity**



**Versatile outrigger  
configuration**



**Doorway  
access**

## TECHNICAL DATA

- » Articulated boom (two elements) + telescopic boom (main boom + 2 extension) + jib
- » Sigma boom articulation
- » 360° non continuous turret rotation on bearing turntable
- » Proportional electro-hydraulic controls in basket
- » Engine start and stop controls from basket
- » Aluminum basket available in single (2'6" x 2'3" x 3'7") or double (4'3" x 2'3" x 3'7") personnel sizes
- » 90° right + 90° left hydraulic basket rotation
- » Basket load sensing device
- » Wireless remote control
- » Dual drive with a maximum speed of 1.25 mph
- » Narrow outrigger configuration capability
- » Track width extends from 2'6" to 4'2"
- » 110V 2.2 kW electric auxiliary motor
- » Hydraulic basket auto-leveling
- » 4 hydraulic outriggers with ground pressure sensors
- » Hour meter
- » 110 V AC EC electrical socket in the basket
- » Standard boom colours blue (RAL 5017) or white (RAL 9003)
- » Meets new ANSI standards
- » Gradeability approximately 31 %
- » Electro-hydraulic steering from the ground with radio control
- » 4 stabilization areas with hydraulic placement



watch the video

**STRENX™**  
PERFORMANCE STEEL



## ENGINES

- » Honda 15 Hp gas engine
- » Kubota diesel engine
- » 48V 300 Ah Lithium battery



DOORWAY ACCESS

PERSONALIZED  
STABILIZERS PADS

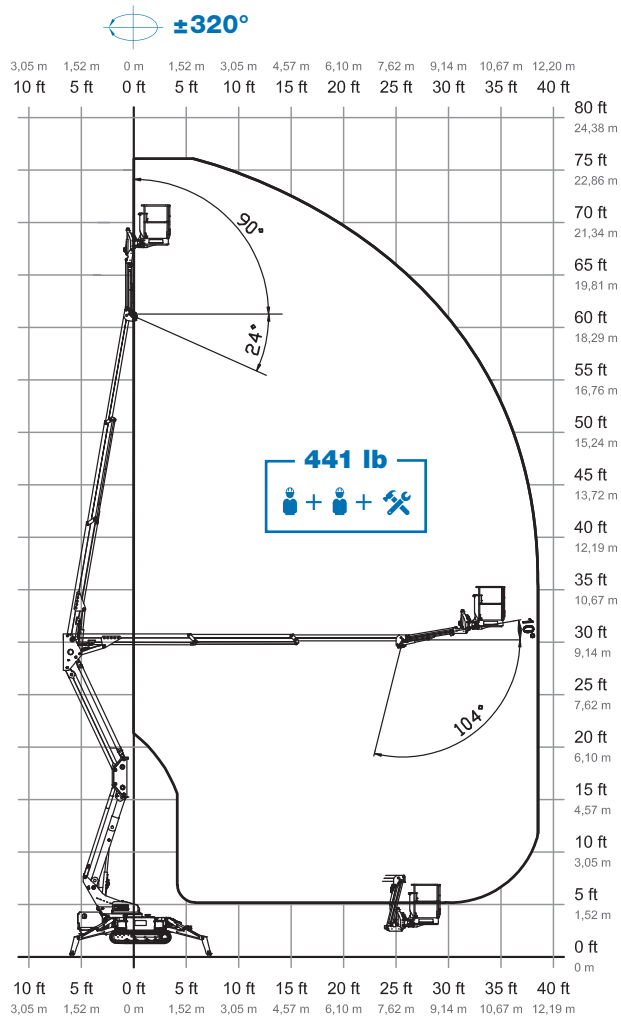


REMOTE CONTROL

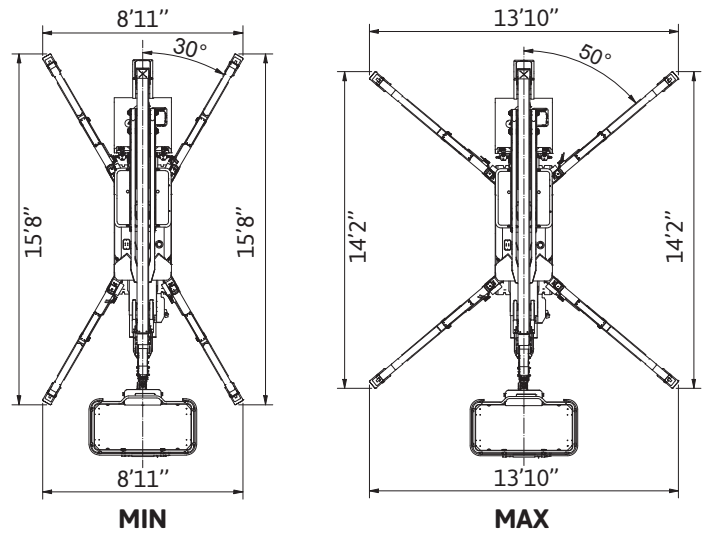


ELECTRIC VERSION

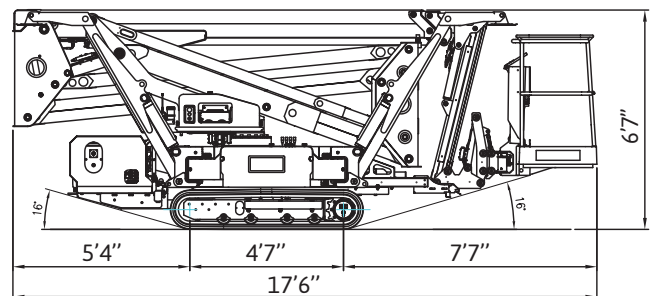
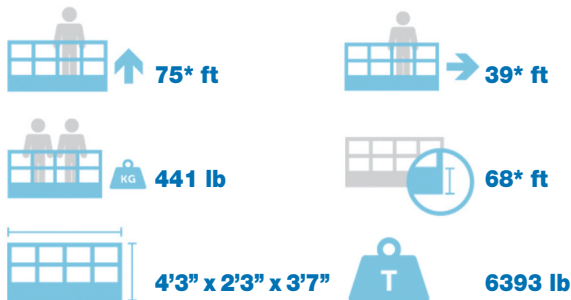
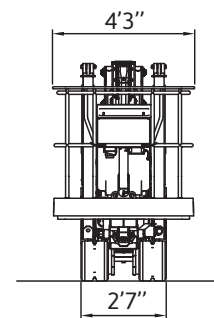
## WORKING ENVELOPE



## OUTRIGGER FOOTPRINT



## DIMENSIONS

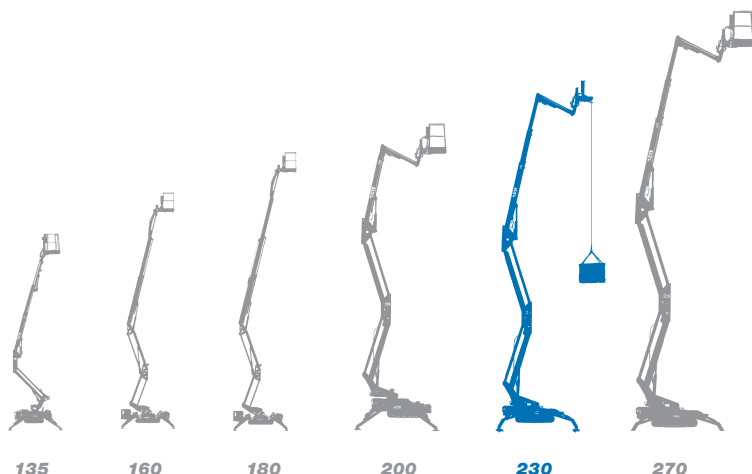


\* outreach and height max values and repeatability can change within ± 3% due to manufacturing variation and working condition.

Product specifications are subject to change without notice or obligation. Technical features and drawings in this brochure are for illustrative purposes only \_TRACCESS 230/75 Imp - ed. 12/22



Track-mounted range from 42 ft to 88 ft



- ★ Most versatile boom configuration
- ★ Most compact machines in class
- ★ Protected electrical & hydraulic systems
- ★ User-friendly, intuitive controls
- ★ Easy maintenance
- ★ Excellent boom stability during operation
- ★ Choice of engines and options



**We are CTE, one of the largest  
european companies in the  
aerial work platform industry.**



**After sales  
assistance**



**Service  
spare parts**



**Scheduled  
maintenance**



**On-site  
assistance**



**Authorized  
workshops**

“Work Becomes Easy” with efficient services, innovative technical solutions, timely assistance, professional guidance and training. This is our core philosophy when considering safety and quality of life on the job. CTE is united by ideas, motivation, and passion to simplify the work of our customers who need to elevate people.



**CTE North America Corporation**  
16 Tolland Turnpike, Willington, CT 06279  
Ph. (860) 656-9077  
[www.ctelift-na.com](http://www.ctelift-na.com) - [info@ctelift-na.com](mailto:info@ctelift-na.com)

CTE North America Corporation is part of  
**CTE SpA**  
Via Caproni, 7 - 38068 Rovereto TN - Italy  
[www.ctelift.com](http://www.ctelift.com)



UNI EN ISO 9001:2008 IT 61659